



**OPERATING INSTRUCTIONS  
AND PARTS LIST FOR**

## **SERIES 30000**

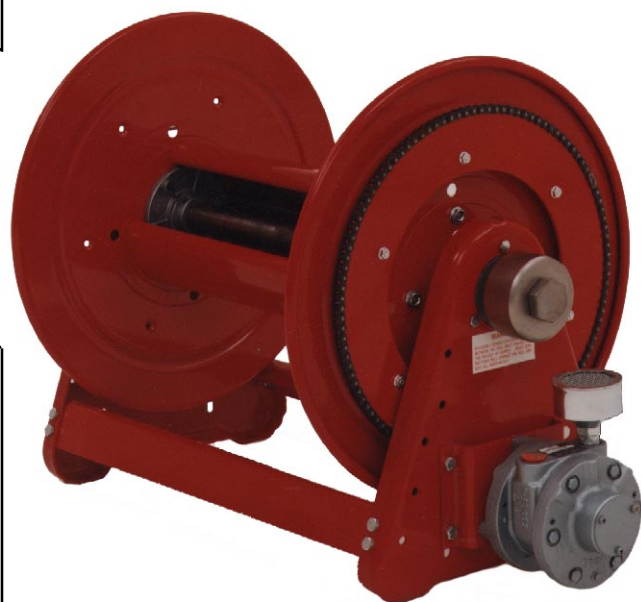
**HOSE REELS**



**- MANUAL DRIVEN -**



**- POWER DRIVEN -**



**- AIR DRIVEN -**

Form No. 534-89  
Rev: 6/02

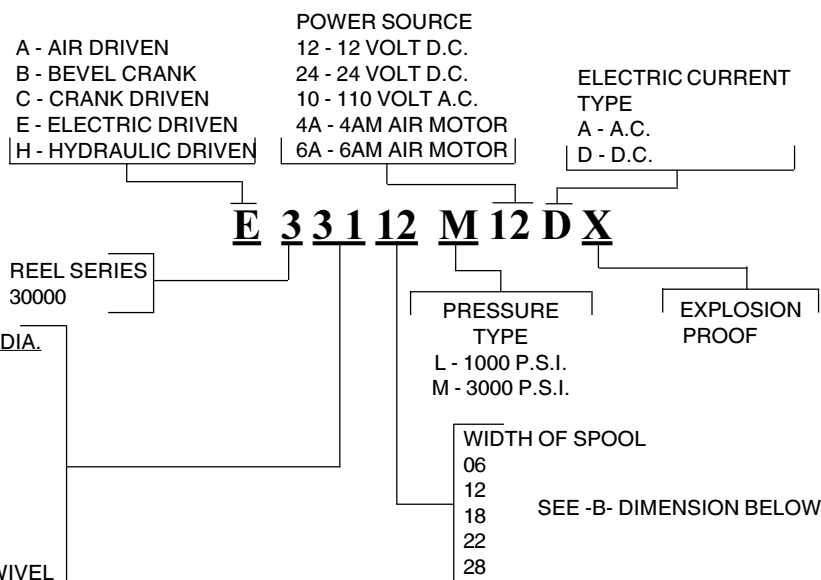
### IMPORTANT

READ THIS MANUAL CAREFULLY BEFORE INSTALLING,  
OPERATING, OR SERVICING THIS EQUIPMENT

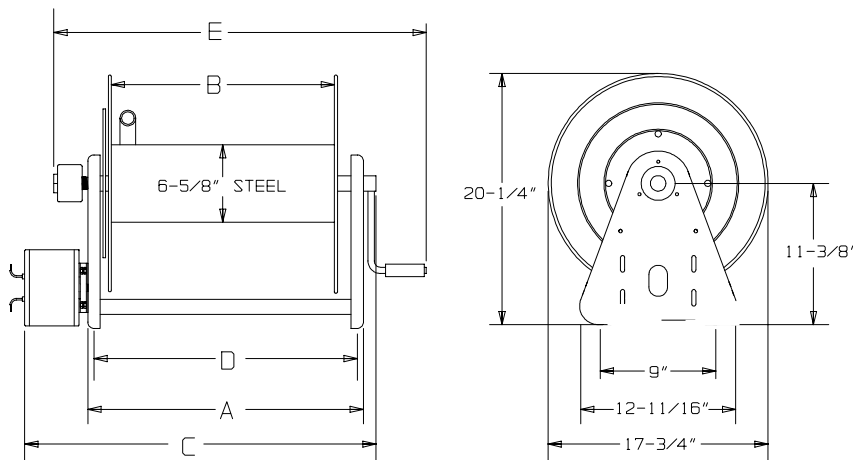
### REELCRAFT -MODEL NUMBER SIGNIFICANCE

A coded model number found on the reel nameplate indicates parameters and characteristics of that particular hose reel. Use the following diagram to verify your reel.

#### MODEL NUMBER SIGNIFICANCE



#### DIMENSIONAL DATA



PARTNUMBER	-A-	-B-	-C-	-D-	-E-
E 33006 M12D	11"	6"	19"	9 3/4"	
E 33112 M12D	17"	12"	25 1/4"	15 3/4"	
E 33118 M12D	23"	18"	31 1/4"	21 3/4"	
E 33122 M12D	27"	22"	35 1/4"	25 3/4"	
E 33128 M12D	32"	27"	40 1/4"	30 3/4"	
E 33106 M10A	11"	6"	19"	9 3/4"	
E 33112 M10A	17"	12"	25 1/4"	15 3/4"	
E 33118 M10A	23"	18"	31 1/4"	21 3/4"	
E 33122 M10A	27"	22"	35 1/4"	25 3/4"	
E 33128 M10A	32"	27"	40 1/4"	30 3/4"	
A 33106 M4A	11"	6"	19"	9 3/4"	
A 33112 M4A	17"	12"	25 1/4"	15 3/4"	
A 33118 M4A	23"	18"	31 1/4"	21 3/4"	
A 33122 M4A	27"	22"	35 1/4"	25 3/4"	
A 33128 M4A	32"	27"	40 1/4"	30 3/4"	
A 33106 M6A	11"	6"	19"	9 3/4"	
A 33112 M6A	17"	12"	25 1/4"	15 3/4"	
A 33118 M6A	23"	18"	31 1/4"	21 3/4"	
A 33122 M6A	27"	22"	35 1/4"	25 3/4"	
A 33128 M6A	32"	27"	40 1/4"	30 3/4"	
C 33106 M	11"	6"		9 3/4"	19"
C 33112 M	17"	12"		15 3/4"	25"
C 33118 M	23"	18"		21 3/4"	31"
C 33122 M	27"	22"		25 3/4"	35"
C 33128 M	32"	27"		30 3/4"	40"

### PERSONNEL SAFETY

Personnel injury and/or equipment damage may result if proper safety precautions are not observed.

- Ensure that the reel has been properly installed before connecting supply line (see installation instructions).
- Bleed fluid/gas pressure from system before servicing reel.
- Before connecting reel to supply line ensure that supply line pressure does not exceed maximum rated working pressure of reel.
- Do not play pranks on other personnel. Even low pressure is very dangerous and can cause irreparable damage or death.
- Do not wear loose fitting clothing while operating reel.
- Be aware of other personnel in work area.
- Be aware of other machinery in work area.
- If a leak occurs in the hose or reel, remove supply line pressure immediately.
- If the reel is power driven check for loose, frayed, and/or broken wires before operating.
- Treat and respect a hose reel as any other piece of machinery, observing all common safety practices.

### INSTALLATIONINSTRUCTIONS

#### Inspection

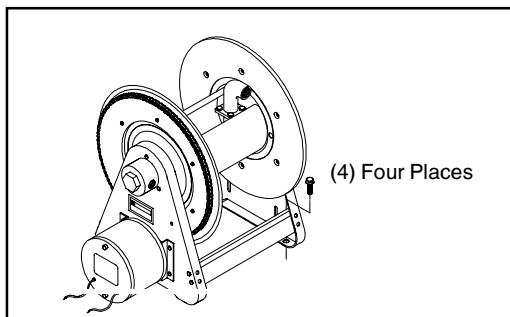
Unpack and inspect reel for damage. Turn the reel by hand to check for smooth operation. Check for completeness.

#### Mounting Of All Hose Reels

##### NOTE

**Ensure that mounting surface is flat to prevent binding on reel after it is mounted.**

- 1) Two 1/2" diameter mounting holes are located at the base of each side support panel (2 each). Mount reel using four (customer supplied) bolts; tightening them securely to ensure a solid, rigid attachment.

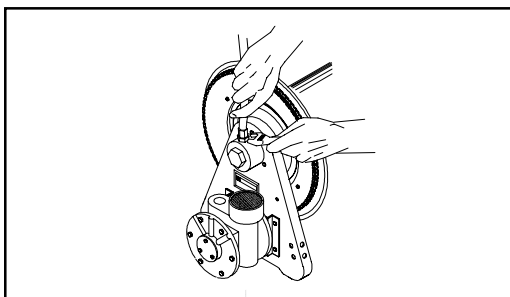


- 2) Perform the following steps only after all other installation steps, pertaining to your particular reel, are accomplished. Refer to page 4 for special instructions.

##### NOTE

**A flexible hose connection must be used to compensate for any offset between the supply line and reel swivel.**

- 3) Apply thread compound to all threads.
- 4) Thread male connector of supply line into swivel. Tighten securely.



#### Manual Driven Reels

Additional mounting instructions are not required.

#### Power Driven Reels

- 1) Determine which end of reel, motor is to be mounted on. If the original factory configuration is not conducive to your application see section in this manual titled, "MODIFICATIONS."

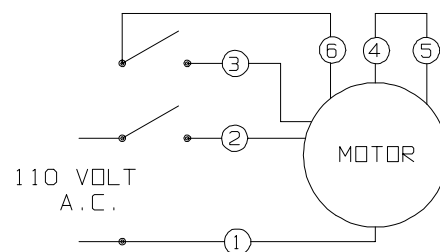
##### CAUTION

**Remove all electrical power when wiring. Do not "hot-wire".**

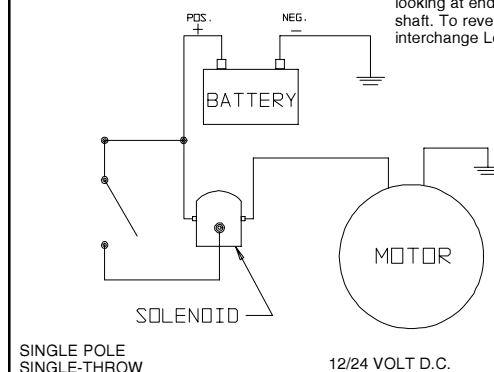
**Observe all applicable NEC/OSHA requirements.**

- 2) Ensure that supply and motor voltage ratings are compatible.
- 3) Consult wiring diagrams (below) and determine which one is applicable to your reel.
- 4) Perform electrical wiring following applicable diagram.

DOUBLE POLE  
SINGLE-THROW  
SWITCH



Connection shown gives counterclockwise rotation looking at end of motor shaft. To reverse rotation interchange Leads 5, 6.



SINGLE POLE  
SINGLE-THROW

12/24 VOLT D.C.

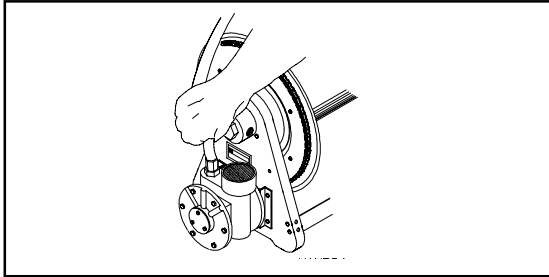
### Air Driven

- 1) Determine which end of reel, motor is to be mounted on. If the original factory configuration is not conducive to your application see section in this manual titled, "MODIFICATIONS."

#### WARNING

**Do not exceed 100 PSI motor inlet pressure. Use an FRL or control valve in line to adjust speed of motor.**

- 2) Connect air line to motor in accordance with diagram.



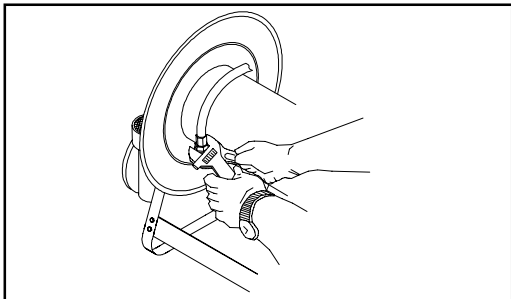
### Connecting The Hose

#### CAUTION

**Do not connect the hose to the connecting tube assembly until after hose reel has been installed.**

**Fully extend and charge hose before winding on to reel. Momentarily open control valve, when initially charging, to purge hose of gases. When fluid appears at control valve, close valve. This prevents flattening of the hose and excessive pressure on the drum when fluid supply is reinitialized at a later time.**

- 1) Apply thread compound to all threads.
- 2) Hand thread male hose connector into connecting tube assembly.
- 3) Using a wrench, firmly hold on to connecting tube assembly while tightening hose connector.



### OPERATING INSTRUCTIONS

#### WARNING-PREVENT STATIC SPARKING

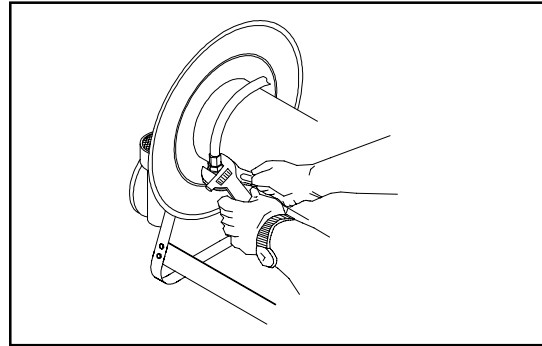
**When working around flammable liquids such as solvents, paints, chemicals, or petroleum products, ensure that the hose reel, hose, and the equipment being serviced are properly grounded. Use grounded hose(s) (static wire). Use an ohmmeter to check continuity of the ground circuit. Fire and/or explosion can result if proper grounding is not achieved. If reel is power or air driven be careful of chain/sprocket drive system. Keep hands clear. Do not wear loose fitting clothing. Pull hose from the reel by grasping the hose itself, not the control handle or swivel.**

4

### SERVICE INSTRUCTIONS

#### Replacing The Hose

- 1) Using a wrench, firmly hold on to the connecting tube assembly while removing hose connector.
- 2) Follow procedures for "Connecting The Hose" (See Installation Instructions).



#### Replacing The Swivel

#### CAUTION

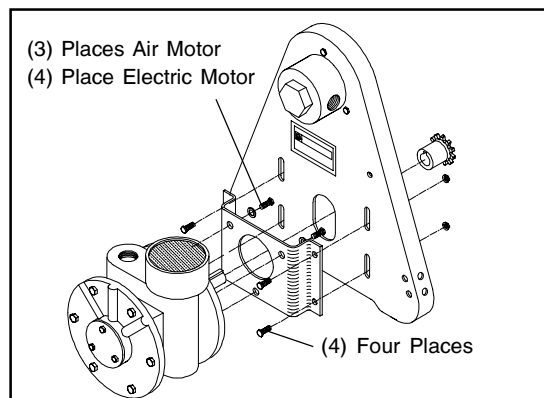
**Remove supply line pressure before performing the following procedure.**

- 1) Remove supply line from swivel.
- 2) Remove swivel assembly from inlet shaft.
- 3) Install swivel assembly to inlet shaft by reversing steps 1 and 2. Apply thread compound to all threads.

#### Replacing The Motor

**Before replacing the motor remove all electrical power (power driven) or air pressure (air driven) from motor.**

- 1) Disconnect wiring/air lines from motor.
- 2) Remove bolts securing motor mounting bracket to reel. Remove bracket. (See diagram on next page).
- 3) Remove bolts attaching motor mounting bracket to motor. Remove motor.
- 4) Install new motor by reversing steps 1 through 3 above.



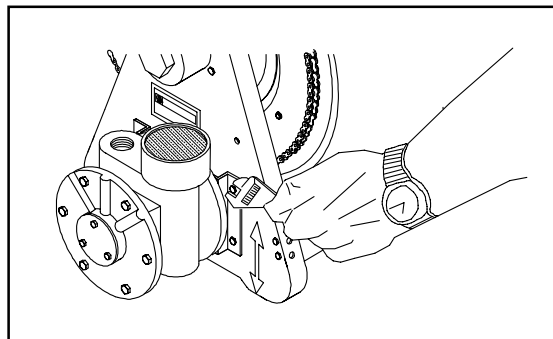
### Adjusting Chain Tension

#### CAUTION

*Before adjusting the chain tension remove all electrical power (power driven) or air pressure (air driven) from motor.*

*Over-tensioned (tightening) of chain results in reduced motor life. Adjust to allow between 1/4 and 1/2 inch play in chain.*

- 1) Loosen bolts (do not remove) securing motor mounting bracket to reel.
  - 2) reel.
  - 3) Move motor mounting bracket and motor until proper chain tension is obtained.
- Tighten motor mounting bracket bolts.

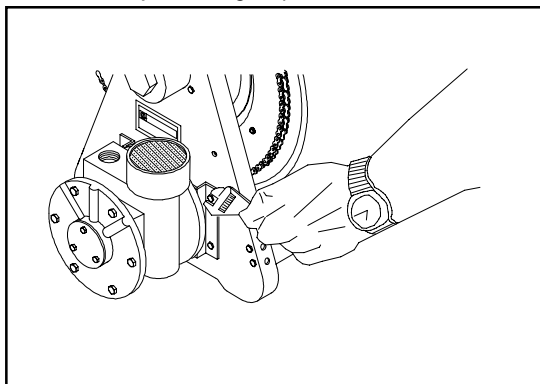


### Replacing The Chain

#### CAUTION

*Before replacing the chain remove all electrical power (power driven) or air pressure (air driven) from motor.*

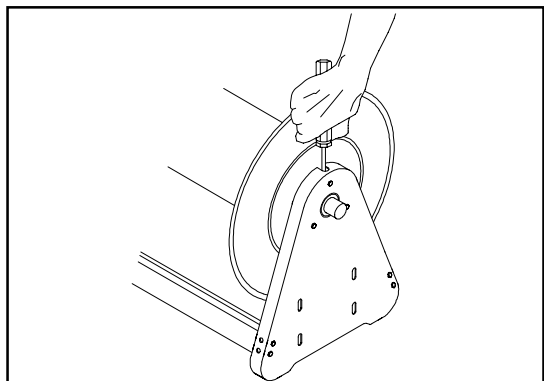
- 1) Loosen (do not remove) bolts securing motor mounting bracket in
  - 2) place.
  - 3) Remove chain master-link.
- Install new chain by reversing steps 1 and 2 above.



### ADJUSTMENT PROCEDURES

#### Adjusting Reel

- 1) Adjust reel drag by loosening or tightening set screw on hub casting on manual driven reel.



### MODIFICATIONS

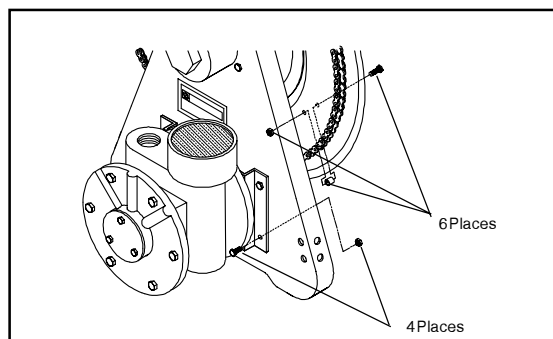
#### CAUTION

*Remove electrical reel power and release all pressure from hoses before beginning any modification.*

#### Motor Mounting

If it is desired that the motor be mounted on the opposite end of the hose reel:

- 1) Remove bolts securing motor mounting bracket and sprocket to reel assembly.
- 2) Assemble components to other end of reel.



#### Crank Driven to Motor Driven Conversion

It is possible to convert a manual driven hose reel to a power or air driven type. Contact Reelcraft factory for information.

### PARTS COMMON TO ALL 30000 SERIES HOSE REELS

ITEM	PART NO.	DESCRIPTION	QTY.	X 3XX06	X 3XX12	X 3XX18	X 3XX22	X 3XX28
2	S318-48	Screw, 5/16-12 x 5/8"	9					
3	260403	Side Frame	2					
5	S85-7	Nut, 5/16-18	8					
6	260399-3	Spool Flange	2					
7	300007	Snap Ring	4					
11	By Model	Tie Rod	4	260402-100	260402-200	260402-300	260402-400	260402-500
12	By Model	Spacer	4	260401-1	260401-2	260401-3	260401-4	260401-5
14	300006	Set Screw, 3/8-16x1/2"	1					
15	280109	Lock Handle Ass'y	1					
20	S2-51	Screw, 5/16-18x1/2"	8					
21	By Model	Cross Brace	2	261501-1	261501-2	261501-3	261501-4	261501-5
22	300107	Nut, 5/16-18	8					

### PARTS COMMON TO SINGLE OUTLET 30000 SERIES HOSE REELS

ITEM	DESCRIPTION	QTY.	X 301XX	X 321XX	X 331XX	X 381XX
1	Swivel Assembly	1	None	600596-2	600599-2	600596-3
8	Inlet Assembly	1	600327-2	600327-1	600327-2	600327-1
9	O'Ring	1	S211-120	S211-120	S211-120	S211-120
10	Screw, 5/16-18 x 3/4"	4	S7-51	S7-51	S7-51	S7-51
13	Hub & Bushing Ass'y	3	600640	600640	600640	600640
19	Support Shaft	1	260770	260770	260770	260770
24	Screw, 1/4-20 x 5/8"	3	S2-42	S2-42	S2-42	S2-42

### PARTS COMMON TO DUAL OUTLET 30000 SERIES HOSE REELS

ITEM	DESCRIPTION	QTY.	X 341XX	X 351XX	X 3XX06	X 3XX12	X 3XX18	X 3XX22	X 3XX28
1	Swivel Assembly	2	600596-2	600599-2	--	--	--	--	--
8	Inlet Shaft Assembly	1	--	--	600189-1	600189-2	600189-3	600189-4	600189-5
23	Reducer Bushing	4	S174-109	None	--	--	--	--	--
24	Screw, 1/4-20 x 5/8"	3	S318-48	S318-48	S2-42	S2-42	S2-42	S2-42	S2-42

### PARTS COMMON TO MANUAL DRIVEN 30000 SERIES HOSE REELS

ITEM	PART NO.	DESCRIPTION	QTY.
4	300099	Set Screw 3/8 Brass	1
16	300089	Set Screw 3/8 Square Head	1
17	S137-4	Snap Ring	1
18	600102	Crank Handle Assembly	1

#### HOW TO ORDER REPLACEMENT PARTS

Please provide the following information:

- Model Number
- Serial Number
- Parts Description and Number  
as shown in Parts List

Address order to:

Reelcraft Industries, Inc.

One Reelcraft Center

P.O. Box 248

Columbia City, IN 46725-9987

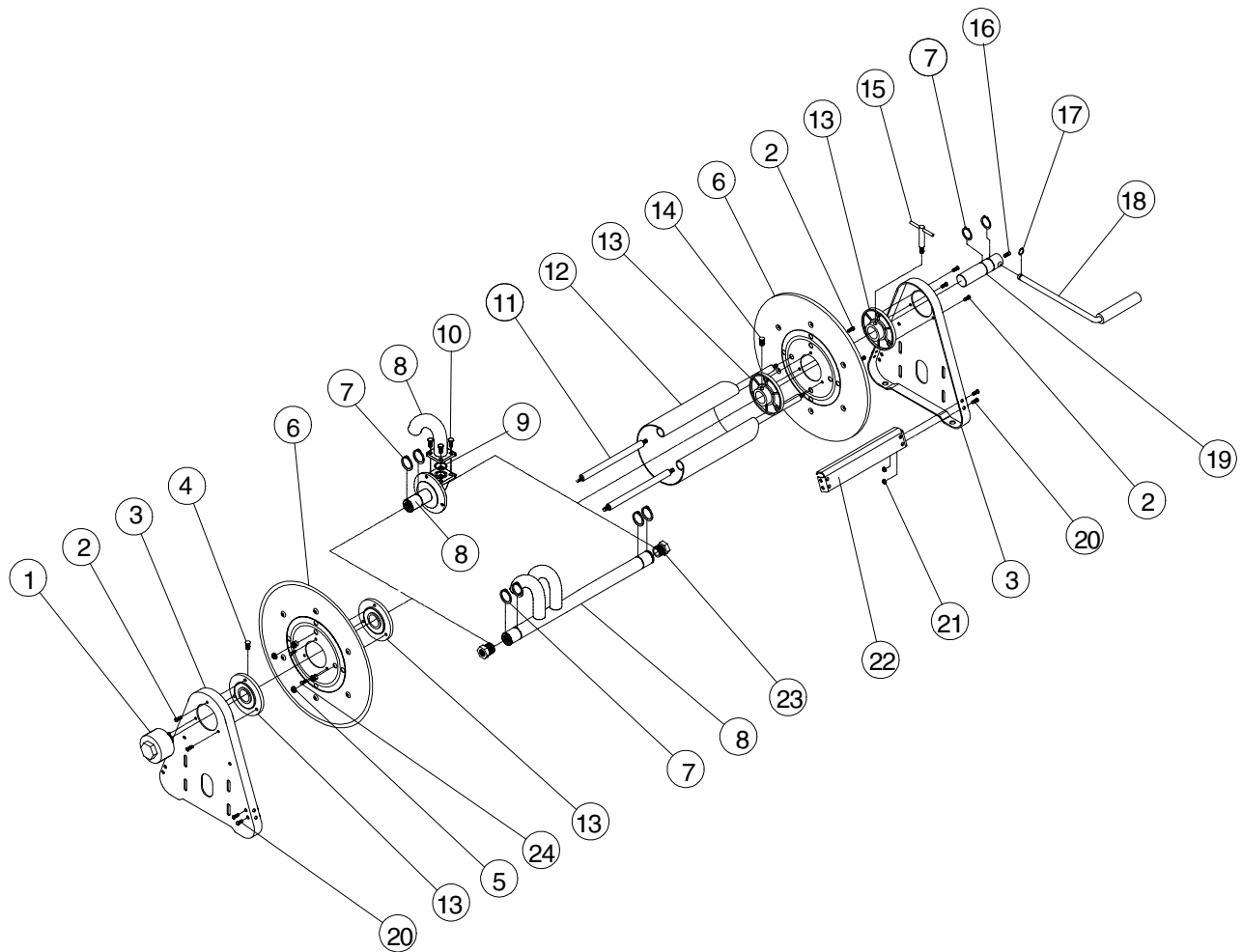
For assistance phone 260-248-8188, or 1-800-444-3134

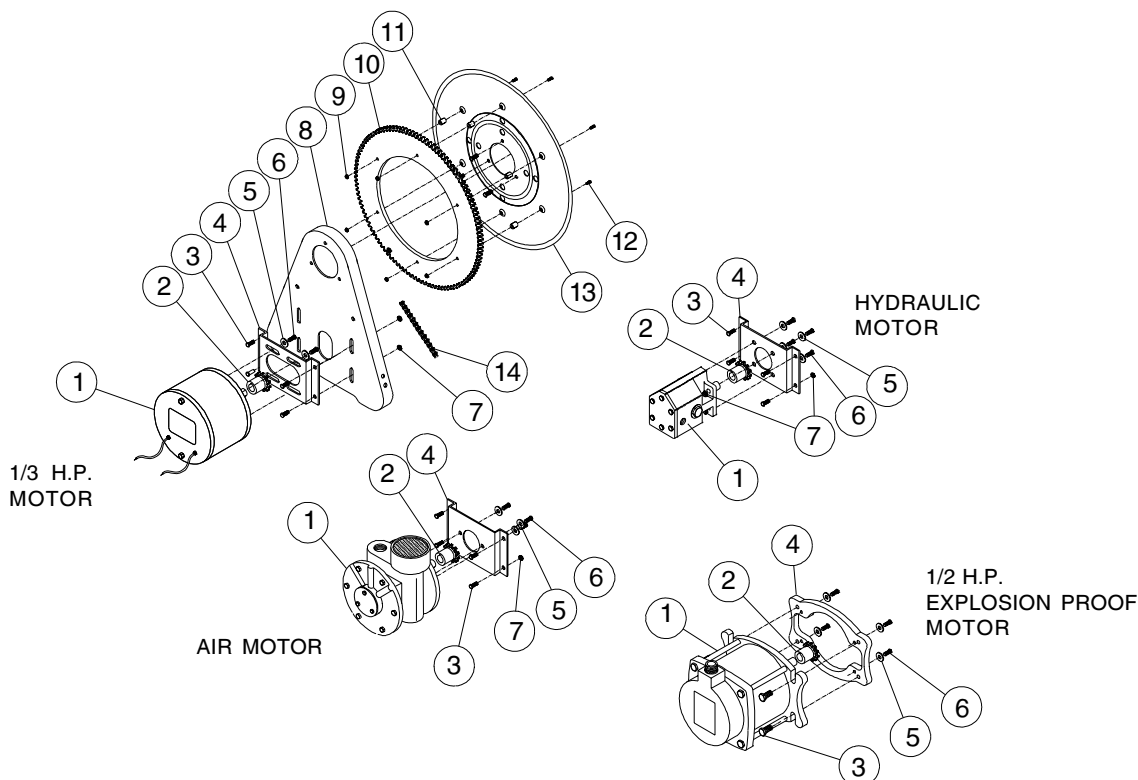
### LIMITED ONE YEAR WARRANTY

ALL PRODUCTS MANUFACTURED BY REELCRAFT INDUSTRIES, INC., ARE WARRANTED TO BE FREE OF DEFECTS IN MATERIAL AND WORKMANSHIP FOR TWELVE (12) MONTHS FROM THE DATE OF SHIPMENT, EXCEPT HOSE AND POWER MOTOR.\* REELCRAFT'S LIABILITY SHALL BE LIMITED TO REPAIR OF DEFECTIVE MATERIAL WITHIN THE WARRANTY PERIOD WHEN RETURNED FREIGHT PREPAID TO ITS PLANT OR TO A SERVICE DEPOT DESIGNATED BY REELCRAFT.

THE WARRANTY DOES NOT COVER DAMAGE CAUSED BY ACCIDENT, ABUSE, OR FAULTY INSTALLATION. REELCRAFT PRODUCTS MUST BE INSTALLED AND MAINTAINED IN COMPLIANCE WITH THE MANUAL OF INSTRUCTIONS FURNISHED WITH EACH REEL.

\*Power motor is warranted separately by motor manufacturer for a period of twelve (12) months.





### PARTS COMMON TO ALL MOTORIZED 30000 SERIES HOSE REELS

ITEM	PART NO.	DESCRIPTION	QTY.
8	260403 REF.	Side Frame	-
9	S79-3	Flange Nut 10-32	6
10	260407	Spool Gear	1
11	260410	Spacer, Gear	6
12	S27-112	Screw 10-32 x 1 1/8"	6
13	260399-3 REF	Spool Flange	-
14	260406	Chain, Drive #35	1

### PARTS COMMON TO 1/3 HORSE POWER MOTOR DRIVEN REEL (REFERENCE MODEL NUMBER SIGNIFICANCE)

ITEM	DESCRIPTION	QTY.	X12D	X24D
1	Drive Motor	1	260409	260450
2	Gear, Motor	1	260408	260408
3	Screw 5/16-18 x 5/8"	4	S2-52	S2-52
4	Bracket, Motor	1	260405	260405
5	Washer	4	300039	300039
6	Screw 5/16-18 x 5/8"	4	S2-52	S2-52
7	Lock Nut 5/16-18	4	S85-7	S85-7

### PARTS COMMON TO AIR MOTOR DRIVEN REELS (REFERENCE MODEL NUMBER SIGNIFICANCE)

ITEM	DESCRIPTION	QTY.	X4A	X6A
1	Drive Motor	1	260428	260429
2	Gear, Motor	1	260436	260408
3	Screw 5/16-18 x 5/8"	4	S2-52	S2-52
4	Bracket, Motor	1	260405	260433
5	Washer	11	300039	300039
6	Screw 5/16-18 x 1/2"	6	S2-42	S2-51
7	Lock Nut 5/16-18	12	S85-7	S85-7

### PARTS COMMON TO HYDRAULIC DRIVEN REELS (REFERENCE MODEL NUMBER SIGNIFICANCE)

ITEM	DESCRIPTION	QTY.	H 3XXXX X
1	Drive Motor	1	260553
2	Gear, Motor	1	260436
3	Screw 5/16-18 x 5/8"	4	S2-52
4	Bracket, Motor	1	260405
5	Washer	4	300039
6	Screw 5/16-18 x 3/4"	4	S2-53
7	Lock Nut 5/16-18	8	S85-7

### PARTS COMMON TO 1/2 HORSE EXPLOSION PROOF MOTOR REELS (REFERENCE MODEL NUMBER SIGNIFICANCE)

ITEM	DESCRIPTION	QTY.	X12DX	X24DX	X10AX
1	Drive Motor	1	260583	260626	260430
2	Gear, Motor	1	260434	260434	260434
3	Screw 3/8-16 x 3/4"	4	S44-3	S44-3	S44-3
4	Bracket, Motor	1	260456	260456	260456
5	Washer	4	300039	300039	300039
6	Screw 5/16-18 x 5/8"	4	S2-52	S2-52	S2-52