



REELCRAFT INDUSTRIES, INC.
P.O. Box 248 • One Reelcraft Center
Columbia City, Indiana 46725
260-248-8188
1-800-444-3134
Fax: 260-248-2605

HOSE REEL

OPERATING INSTRUCTIONS & PARTS LIST

SERIES E9000-LOW PRESSURE MODEL NUMBERS

FE9500 OLPBW
FE9600 OLPBW

SAFETY

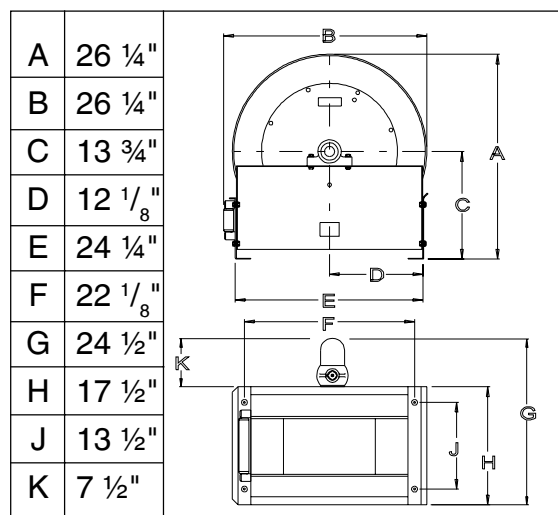
- I. Models designed for fuel are coded with the prefix "F" i.e., "FE9400 OLP." Check name plate on the reel before installing.
- II. Do not use reel at higher pressures or temperatures than listed on the back of this bulletin.
- III. Remove all spring tension before beginning disassembly process.
- IV. Reel spring motor case is permanently sealed. Any attempt to remove the spring motor may cause serious injury.

LIMITED WARRANTY

Reelcraft affirms its product confidence with the following warranty.

All products manufactured by Reelcraft Industries, Inc. are warranted to be free of defects in material and workmanship for 12 months from the date of shipment, **except hose**. Reelcraft's liability shall be limited to repair or replacement of defective material within the warranty period when returned freight prepaid to its plant or to a service depot designated by Reelcraft.

The warranty does not cover damage caused by accident, abuse or faulty installation. Reelcraft products must be installed and maintained in compliance with the manual of instructions furnished with each reel.



Four 7/16" Mounting Holes

INSTRUCTIONS

Installation:

A flexible hose connection must be used between the hose reel inlet and source of supply to prevent possible misalignment and binding.

Mounting:

The swivel union is packed separately in the reel carton, use teflon tape to assure a satisfactory seal. A flexible connection between the reel and the source of supply is required. Nonflexible connections will void the warranty, pressure rating of inlet hose must be equal or more than the pressure rating of the reel. Consult factory for proper spring when installing reels above 16 ft.

Lubrication:

Hose reel spring is permanently sealed and requires no further lubrication. Bearings fitted with grease zerts require periodic lubrication as required.

Replacing Hose:

1. Wind spool flange clockwise-facing swivel-until spring is tight.
2. **Back off three turns and latch.**
3. Insert hose through roller guide.
4. Connect hose fitting to female outlet ell.

Adjustments:

To adjust spring tension, add or remove wraps of hose from the spool, one wrap at a time until desired tension is obtained.

Repairs:

Extensive repairs should be performed only by an authorized serviceman or factory to avoid damage which may void your warranty. Remove all spring tension before beginning disassembly process.

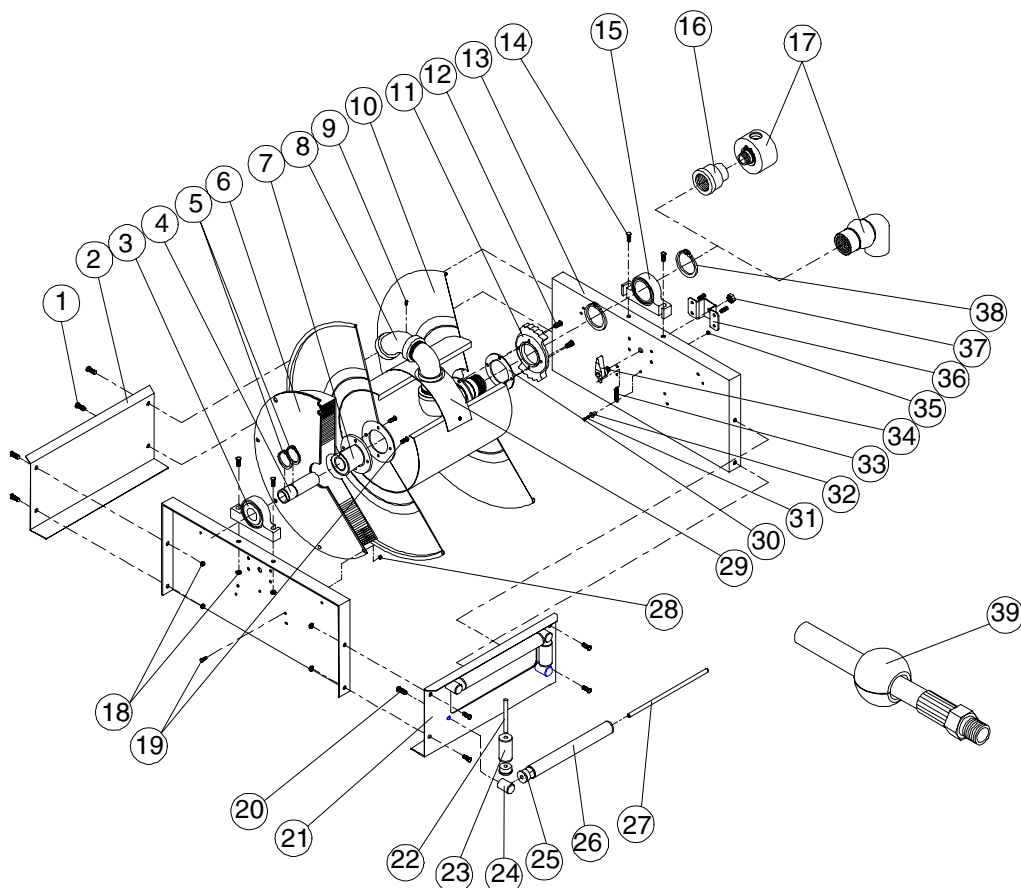
Modification:

Hose latching mechanism can be removed for constant tension applications.

Form# 775-595
Rev: 6/02

Replacement Parts List

Series FE9000-0



ITEM NO.	PART NO.	NO. REQ.	DESCRIPTION	ITEM NO.	PART NO.	NO. REQ.	DESCRIPTION	ITEM NO.	PART NO.	NO. REQ.	DESCRIPTION
1	S44-2	8	3/8-16 x 5/8" Screw	13	260895	2	Side Frame	27	261110	2	Guide Roller Pin
2	261112	1	End Frame	14	S44-8	4	3/8-16 x 1 3/4" Screw	28	S281-4	8	1/4-20 Hex Nut
3	600416	1	Pillow Block Ass'y	15	600467	1	Pillow Block Ass'y	29	261111	1	Inlet Support
4	261114	1	Support Shaft	18	S281-6	12	3/8-16 Hex Nut	30	261116	2	Ratchet Spacer
5	S140-34	2	Snap Ring	19	S2-41	12	1/4-20 x 1/2" Screw	31	S20-110	1	10-32 x 7/8" Screw
6	600545	1	Springcase Ass'y	20	S2-51	4	5/16-18 x 1/2" Screw	32	400012	1	Latch Bushing
7	260888	1	Spring Arbor	21	600542	1	Roller Bracket Ass'y	33	260067	1	Latch Spring
8	600544	1	Inlet Ass'y	22	270015	2	Guide Roller Pin	34	600454	1	Latch Pawl Ass'y
9	S32-136	2	10-32 x 3/8" Self Tap. Screw	23	600001	2	Guide Roller Ass'y	35	S82-15	1	10-32 Nyloc Nut
10	600543	1	Sheave Ass'y	24	270014	4	Guide Roller Post	36	260934	1	Latch Bracket
11	261115	1	Latch Ratchet	25	270015	8	Guide Roller Bushing	37	S280-8	1	1/2-20 Hex Nut
12	S2-46	4	1/4-20 x 1" Screw	26	600216-20	2	Guide Roller Ass'y	38	S140-45	2	Snap Ring

ITEM NO.	DESCRIPTION	NO. REQ.	FE9500 OLPBW	FE9600 OLPBW
16	Reducer 1½-1¼"	1	S172-9	None
17	90° Swivel	1	600614-2	600612-2
	Straight Swivel	1	600613-2	600609-2
39	Hose Bumper Ass'y	1	600547-1	600547-2
-	Hose I.D.	--	1¼"	1½"
-	Hose Length	--	60'	50'
-	Maximum Pressure	--	500 P.S.I.	500 P.S.I.
-	Maximum Temperature	-	210°F	210°F

HOW TO ORDER REPLACEMENT PARTS

Please provide the following information:

- Model Number
- Serial Number
- Parts Description and Number as shown in Parts List

Address order to:
Reelcraft Industries, Inc.
One Reelcraft Center
P.O. Box 248
Columbia City, IN 46725

For assistance phone 260-248-8188, or 1-800-444-3134